

Ultima Light Dustbuster

Ultima Light Dustbuster

Description:

Ultima Light Dustbuster from **Panel Rey**[®] is a multipurpose joint compound that is easy to apply and has an excellent finish. It produces less dust in the air during sanding, reducing the impact on the interior air quality. Especially designed to provide a smooth application and easy sanding, it is 20% lighter than traditional compounds and offers greater coverage with less cracking and shrinkage. This product is ideal for refurbishment projects where the work is being carried out in an active commercial or residential environment.



Advantages:

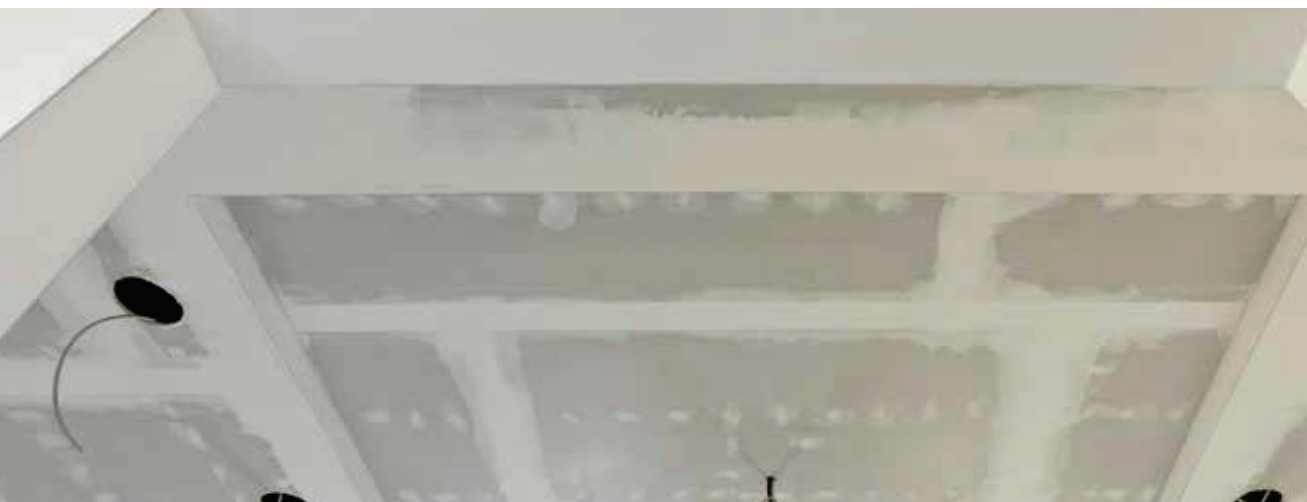
- **Ultima Light Dustbuster** From **Panel Rey**[®] reduces the dust from sanding by more than 50%.
- The low dust emissions improve the interior air quality, save time and make cleaning easier.
- Its properties make it ideal for joint finishing treatment and achieving a smoother surface.
- High adherence.
- Low shrinkage.

Recommended Applications:

- Treating joints and accessories.
- Final coats.
- Cracking repairs.

Product Data:

Coverage: 1.6m²/kg *approximately*
Availability: **Box:** 17.4 kg



Make the best compound choice of the Panel Rey® family

If you are looking for:	Joint tape (1st & 2nd coat)	Refilling metal or PVC accessories	Joint finishing & accessories	Refining nails & screws	Finish the work quickly
Midweight	★★★	★★★	✓✓	✓✓	✓✓
Ultima Light	✓✓	✓✓	★★★	★★★	✓✓
Ultima Light Dustbuster	✓✓	✓✓	★★★	★★★	✓✓
Easy Set	★★★	✓✓	✓	★★★	★★★

✓ Acceptable performance for this application, but you can find a better Panel Rey® product ✓✓ Very good performance for this application. We recommend using it. ★★★ Excellent performance for this application. You will not find a better product.

Comparative characteristics of multipurpose ready mix products

PRODUCT	Midweight	Ultima Light	Ultima Light Dustbuster
Net mixture per box of 3.5 gal(kg)	19.0	17.4	17.4
Ready Mix Density (kg/L)	1.67	1.35	1.35
Viscosity @ 25°C (cP/1000)	175	121	121
% Adhesion with Panel Rey® tape	98	97	97
% of shrinkage	13	16	16

This information does not represent product specifications. It is only a comparison reference. See ASTM C-475 Standard to verify international specifications that apply to the product.

Preparation:

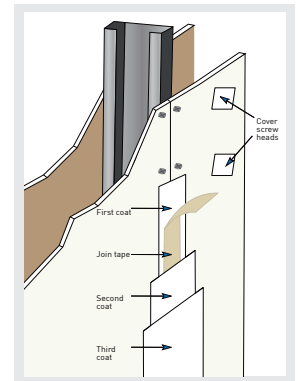
Before beginning, verify that all surfaces are dry, clean and free of grease or dust that inhibit the correct adherence to the drywall. Mix the content before applying. For taping and finishing joints, thin as necessary by adding clean water. Do not add more than 2% (by weight of product) of water because it may cause cracking and bonding problems. This product meets the requirements of the ASTM-C475.

General Application:

First Coat: With a 6" joint knife fill the joint recess with compound. Place the tape along the joint, press it and remove the overage. Then immediately apply a coat of compound with an 8" taping knife. Afterwards cover screw heads, fasteners and accessories.

Second and Third Coat: When the compound is completely dry, approximately 8 hours later, apply a second coat with a 10" taping knife then smooth the surface. Repeat the same process for the third coat with a 12" taping knife. Screw heads, fasteners and accessories must be covered with three coats of compound. Applications and finishes should be in accordance with AS/NZS 2859: Gypsum Linings.

Finishing: At the end of the third coat, the joint treatment should be 12" width. After the last coat has dried, lightly sand the joint and the covered accessories, leaving the wall ready for the final finish.



Storage:

Store in a fresh and dry place. Do not stack more than two pallets high. Protect from freezing and extreme heat. The product has a 12 month shelf life from the date of manufacture.

Caution: Thin as necessary by adding clean water avoiding overage. Ensure that the compound temperature, environment and application surface do not exceed 10°C and maintain an adequate workplace ventilation to eliminate the moisture excess. Use a mask and safety goggles. Dust resulting from sanding may irritate eyes, nose or throat. Do not ingest this product. KEEP OUT OF THE REACH OF CHILDREN. Refer to the MSDS for further safety information.

Distributed in Australia by:



choicebuildingproducts.com.au
 Ph 08 9452 2551 Fx 08 9493 3393
 Visit 158 Maddington Road, Maddington 6109

